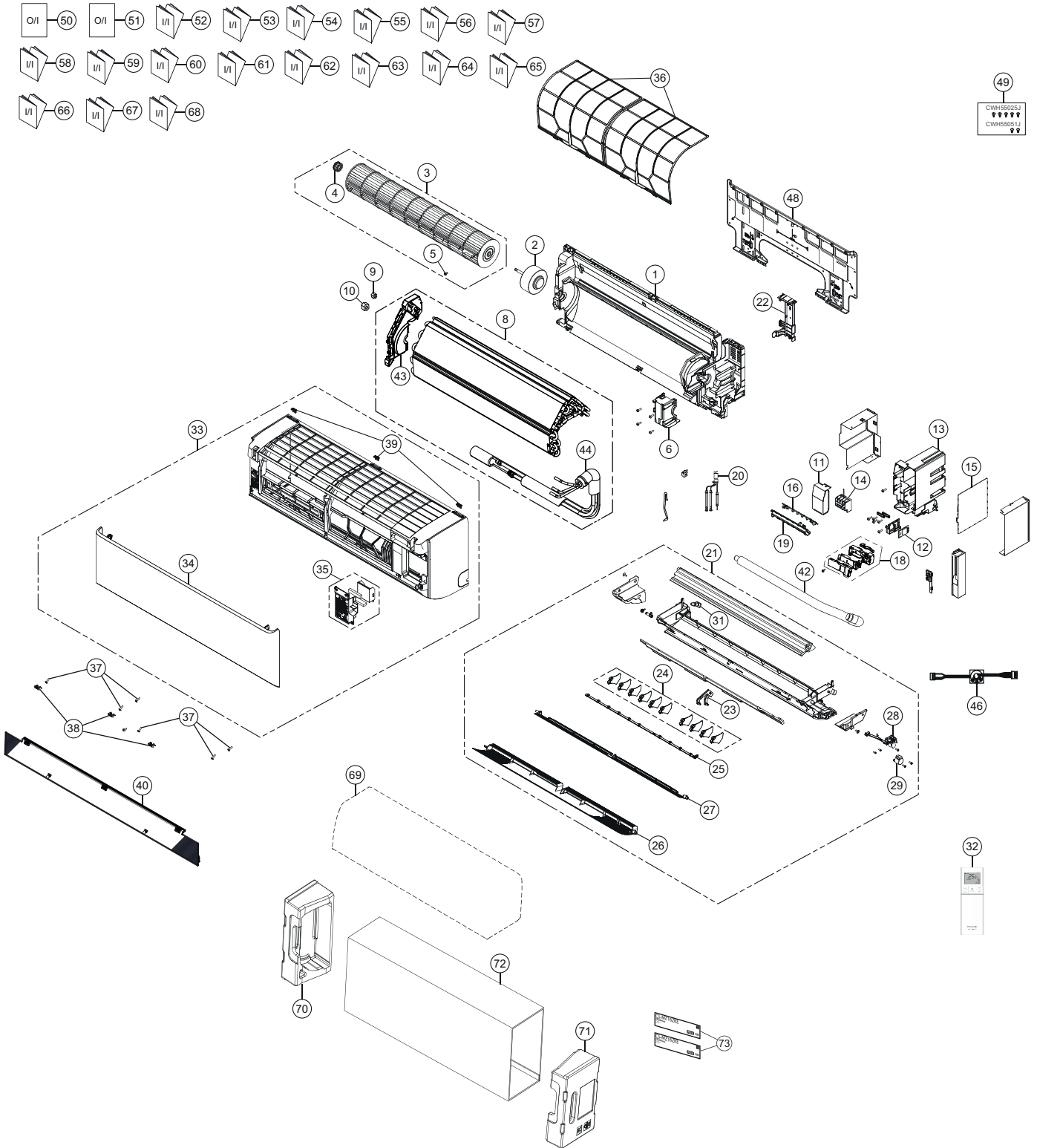


# 16. Exploded View and Replacement Parts List

## 16.1 Indoor Unit

### 16.1.1 CS-MZ16ZKE



**Note**  
 The above exploded view is for the purpose of parts disassembly and replacement.  
 The non-numbered parts are not kept as standard service parts.

SAFETY	REF. NO.	PART NAME & DESCRIPTION	QTY.	CS-MZ16ZKE	REMARK
	1	CHASSIS COMPLETE	1	ACXD50C04160	
⚠	2	FAN MOTOR	1	L6CBYYL0435	O
	3	CROSS-FLOW FAN COMPLETE	1	ACXH02C01480	
	4	BEARING ASSY	1	CWH64K1006	
	5	SCREW - CROSS-FLOW FAN	1	CWH551146	
	6	FAN MOTOR BRACKET	1	ACXD54-04360	
	8	EVAPORATOR	1	ACXB30C32540	O
	9	FLARE NUT (LIQUID)	1	CWT251048	
	10	FLARE NUT (GAS)	1	CWT251049	
	11	CONTROL BOARD COVER	1	ACXH13-08680	
⚠	12	ELECTRONIC CONTROLLER- WIFI	1	ACXA73-45970	O
	13	CONTROL BOARD CASING	1	ACXH10-08620	
⚠	14	TERMINAL BOARD COMPLETE	1	ACXA28C05870	O
⚠	15	ELECTRONIC CONTROLLER - MAIN	1	ACXA73C91640	O
⚠	16	ELECTRONIC CONTROLLER-INDICATOR	1	ACXA73-37110	O
⚠	18	GENERATOR COMPLETE	1	ACXH94C01760	O
	19	INDICATOR HOLDER	1	ACXD93-22430	
⚠	20	SENSOR COMPLETE	1	CWA50C2664	O
	21	DISCHARGE GRILLE COMPLETE	1	ACXE20C06080	O
	22	BACK COVER CHASSIS	1	ACXD93-22420	
	23	FULCRUM	1	ACXH62-00790	
	24	VERTICAL VANE	10	ACXE24-04000	
	25	CONNECTING BAR	1	ACXE26-02550	
	26	HORIZONTAL VANE COMPLETE - OUTER	1	ACXE24C04660	
	27	HORIZONTAL VANE COMPLETE - INNER	1	ACXE24C04670	
⚠	28	AIR SWING MOTOR ASSY	1	ACXA98K00220	O
⚠	29	AIR SWING MOTOR	1	ACXA98-02420	O
	31	CAP - DRAIN TRAY	1	CWH521096	
⚠	32	REMOTE CONTROL COMPLETE	1	ACXA75C23690	O
	33	FRONT GRILLE COMPLETE	1	ACXE10C13660	O
	34	INTAKE GRILLE COMPLETE	1	ACXE22K09860	
	35	GRILLE DOOR COMPLETE	1	ACXE14C01440	
	36	AIR FILTER	2	ACXD00-02990	
	37	SCREW - FRONT GRILLE	6	XTT4+16CFJ	
	38	CAP - FRONT GRILLE	3	ACXH52-04000	
	39	PARTICULAR PIECE -LOCK	3	ACXD93-18690	
	40	PARTICULAR PLATE	1	ACXD90-26390	
	42	DRAIN HOSE	1	ACXH85-00211	
	43	BOX SHAPED PLATE	1	ACXD66-03420	
	44	TUBE ASSY-COMPLETE	1	ACXT00C34830	
⚠	46	LEAD WIRE-COMPLETE	1	ACXA60C94030	O
	48	INSTALLATION PLATE	1	ACXH36-00840	
	49	BAG COMPLETE - INSTALLATION SCREW	1	CWH82C1705	
	50	OPERATING INSTRUCTION	1	ACXF55-34740	
	51	OPERATING INSTRUCTION	1	ACXF55-34750	
	52	INSTALLATION INSTRUCTION	1	ACXF60-51050	
	53	INSTALLATION INSTRUCTION	1	ACXF60-51060	

SAFETY	REF. NO.	PART NAME & DESCRIPTION	QTY.	CS-MZ16ZKE	REMARK
	54	INSTALLATION INSTRUCTION	1	ACXF60-51070	
	55	INSTALLATION INSTRUCTION	1	ACXF60-51080	
	56	INSTALLATION INSTRUCTION	1	ACXF60-51090	
	57	INSTALLATION INSTRUCTION	1	ACXF60-51100	
	58	INSTALLATION INSTRUCTION	1	ACXF60-51110	
	59	INSTALLATION INSTRUCTION	1	ACXF60-51120	
	60	INSTALLATION INSTRUCTION	1	ACXF60-51130	
	61	INSTALLATION INSTRUCTION	1	ACXF60-51140	
	62	INSTALLATION INSTRUCTION	1	ACXF60-51150	
	63	INSTALLATION INSTRUCTION	1	ACXF60-51160	
	64	INSTALLATION INSTRUCTION	1	ACXF60-51170	
	65	INSTALLATION INSTRUCTION	1	ACXF60-51180	
	66	INSTALLATION INSTRUCTION	1	ACXF60-51190	
	67	INSTALLATION INSTRUCTION	1	ACXF60-51200	
	68	INSTALLATION INSTRUCTION	1	ACXF60-51210	
	69	BAG	1	CWG861497	
	70	SHOCK ABSORBER - LEFT	1	ACXG70-12960	
	71	SHOCK ABSORBER - RIGHT	1	ACXG70-12970	
	72	C.C.CASE	1	ACXG50-57103	
	73	MODEL LABEL	2	ACXF87-02880	

(NOTE)

- All parts are supplied from PAPAMY, Malaysia (Vendor Code: 00029488).
- "O" marked parts are recommended to be kept in stock.